

**BOSTON
WHALER**



**PETREL GLOBAL SHIPS
& BOATS TRADING LLC**

Business Village-Block B 3d Floor, office
309-310, 221 Al Maktoum Rd, Dubai, UAE
www.petrel-global.com, tel.: +971 52 821 6411

280 VANTAGE



**PETREL GLOBAL SHIPS
& BOATS TRADING LLC**

Business Village-Block B 3d Floor, office
309-310, 221 Al Maktoum Rd, Dubai, UAE
www.petrel-global.com, tel.: +971 52 821 6411

280 VANTAGE



**PETREL GLOBAL SHIPS
& BOATS TRADING LLC**

Business Village-Block B 3d Floor, office
309-310, 221 Al Maktoum Rd, Dubai, UAE
www.petrel-global.com, tel.: +971 52 821 6411

280 VANTAGE



**PETREL GLOBAL SHIPS
& BOATS TRADING LLC**

Business Village-Block B 3d Floor, office
309-310, 221 Al Maktoum Rd, Dubai, UAE
www.petrel-global.com, tel.: +971 52 821 6411

280 VANTAGE

TECHNICAL DATA



L.O.A. (with platforms)	29' 1" (8.86 m)
Beam 9'	6" (2.74 m)
Draft	21" (0.53 m)
Weight (dry, no engine)	6,940 lbs (3,148 kg)
Weight (with engine, fuel and water)	9,610 lbs (4,359 kg)
Maximum Weight Capacity	3,911 lbs (1,774 kg)
Swamped Capacity	4,000 lbs (1,814 kg)
Persons Capacity	12
Maximum Horsepower	800 hp (596 kW)
Minimum Horsepower	500 hp (373 kW)
Maximum Engine Weight	1,400 lbs (635 kg)
Transom Height	25" (0.64 m)
Deadrise at Transom	21°
Fuel Capacity	180 gallons (681.3 L)
Water Capacity	20 gallons (76 L)
Waste Capacity	6 gallons (23 L)
Livewell Volume	19 gallons (71.9 L)
Bridge Clearance (with hardtop):	8' 5" (2.57 m)
Bridge Clearance (with hardtop and radar)	9' 1" (2.77 m)
Package boat specs (on trailer, engine up)	26' 10" X 9' 0" X 9' 2"
European Certification	B





**PETREL GLOBAL SHIPS
& BOATS TRADING LLC**

Business Village-Block B 3d Floor, office
309-310, 221 Al Maktoum Rd, Dubai, UAE
www.petrel-global.com, tel.: +971 52 821 6411

280 VANTAGE



**PETREL GLOBAL SHIPS
& BOATS TRADING LLC**

Business Village-Block B 3d Floor, office
309-310, 221 Al Maktoum Rd, Dubai, UAE
www.petrel-global.com, tel.: +971 52 821 6411

280 VANTAGE



**PETREL GLOBAL SHIPS
& BOATS TRADING LLC**

Business Village-Block B 3d Floor, office
309-310, 221 Al Maktoum Rd, Dubai, UAE
www.petrel-global.com, tel.: +971 52 821 6411

280 VANTAGE



**PETREL GLOBAL SHIPS
& BOATS TRADING LLC**

Business Village-Block B 3d Floor, office
309-310, 221 Al Maktoum Rd, Dubai, UAE
www.petrel-global.com, tel.: +971 52 821 6411

280 VANTAGE



**PETREL GLOBAL SHIPS
& BOATS TRADING LLC**

Business Village-Block B 3d Floor, office
309-310, 221 Al Maktoum Rd, Dubai, UAE
www.petrel-global.com., tel.: +971 52 821 6411

280 VANTAGE

10



**PETREL GLOBAL SHIPS
& BOATS TRADING LLC**

Business Village-Block B 3d Floor, office
309-310, 221 Al Maktoum Rd, Dubai, UAE
www.petrel-global.com., tel.: +971 52 821 6411

280 VANTAGE

STANDARD EQUIPMENT

- All hardware 316-L stainless steel
- All rails welded 316-L stainless steel

DECK / COCKPIT

- 28" cockpit depth
- 8" stainless steel cleats – bow (2), pop-up stern (2), pop-up spring line (2)
- Bow and stern eyes
- Cockpit coaming bolsters
- Cockpit courtesy lights – dual color blue/white
- Covered telescoping swim ladder with stainless steel grab rail
- Drink holders (12)
- Heavy-duty rub rail
- Insulated in-floor fishboxes with pump-out (2) (located aft) (25 gallons)
- Molded fiberglass port side dive/boarding door with removable stainless-steel dive ladder and deployable grab rail
- Motorwell drains
- Rod holders (gunnel-mounted, stainless steel) (3)
- Self-bailing cockpit sole
- Stainless steel grab rails
- Transom door with stainless steel latch
- Glass windshield (white or black depending on frame color selection)

COCKPIT UTILITY CENTER

- Coaming pocket with courtesy light and drink holders (2)
- Sink with freshwater faucet
- Starboard aft facing seat with integrated cooler (11 gallons)
- Stainless steel grab rail
- Integrated storage (deleted with refrigerator)

BOW AREA

- Bow bolster
- Bow cushions with backrests

- Bow walkthrough block off panel
- Drink holders (4)
- Fiberglass lids with latches (3)
- Integrated centerline bow cooler (12 gallons)
- Recessed storage / cup holder compartment
- Welded stainless steel forward side rails
- USB charging receptacle (dual)

CONSOLE

- 12 V receptacle
- Access panel to electronics
- Cast stainless steel steering wheel with urethane grip
- Compass
- Courtesy light
- Dash visor
- Drink holders (2)
- Electronics mounting surface
- Helm and companion footrests
- Electrical switch panel with circuit breaker protection
- Storage bucket
- Tempered bonded glass windshield
- Trash door
- Windshield wiper (starboard)

HEAD

- Dash visor
- Decorative floor inlay
- Interior light
- Gasketed lockable entry door with dual gaskets and draw down latch
- Molded fiberglass console liner
- Portable head with pump-out
- Sink with faucet and Corian countertop



STANDARD EQUIPMENT

- Stainless steel grab rail
- Stainless steel storage hooks (2)
- Storage locker
- Storage inboard with material keeper

SEATING

- Aft facing seating at starboard prep station
- Bow seating area with lounge backrests and armrests (port and starboard)
- Convertible port lounge seat with gasketed storage
- Deluxe custom Boston Whaler helm seat with high/low pedestal
- Fold-out stern seat with backrest

STORAGE

- Bow anchor locker with drain and windlass
- Captain's pocket storage with USB outlet below the dash
- Cockpit storage center
- Console storage with stainless steel latch
- Head storage compartment
- Insulated bow storage lockers (port and starboard with overboard drainage)
- Centerline insulated cooler with overboard drainage

MECHANICAL

- 250 V8 Black Dual Mercury® Verado® engines with hydraulic power steering
- Automatic bilge pump
- 12" Simrad NSX Electronics/Navigation Package, Simrad NSX 12" MFD (GPS, chart plotter, fishfinder), Active Imaging 3 in 1 transom mount transducer (CHIRP, SideScan, DownScan), C-Map® Discover™ X Chart Card: North America/Canada
- Battery trays (4)

- Electric horn
- Freshwater system (20 gallons) with bow and stern sprayers
- Fuel tank (175 gallons)
- LED navigation lights
- Recessed electric trim tabs with indicators
- SmartCraft® Deluxe Gauge Package
- Stainless steel propellers
- Tilt steering
- Transducer mount area

VESSELVIEW MOBILE

- Display key engine data on your smartphone (Android or Apple iPhone)
- Bluetooth connection via VesselView® Mobile app (compatible while connected to stereo)
- Troubleshooting assistance with dealer notification



NOTABLE OPTIONS/ACCESSORIES

- ☐ Active Engine Trim (Mercury option that automatically adjusts drive trim based on speed)
- ☐ Air compressor system
- ☐ Anchor Package – low profile windlass with rode and stainless-steel anchor
- ☐ Battery charging system
- ☐ Batteries – GR31 AGM (factory installed)
- ☐ Beach boarding ladder
- ☐ Bow tow eye
- ☐ Corian countertop at utility center
- ☐ Fishing Package – includes: 19 gallon transom livewell with light, raw-water washdown, stainless-steel toe rails with under gunnel storage shelf and lockable rod storage in starboard side console
- ☐ Glovebox (port console)
- ☐ Grey water system
- ☐ Hardtop rod holders (5) (must select hardtop or hardtop w/speakers) (not compatible with SureShade) (deletes tow bit on hardtop)
- ☐ Hardtop spotlight (Must select hardtop or hardtop w/speakers)
- ☐ Lighting - underwater LED
- ☐ Rails – split bow rail
- ☐ Rails – white rub rail with stainless steel insert
- ☐ Rails – black rub-rail with stainless steel insert
- ☐ Refrigerator at cockpit with dedicated storage and breaker for shut off
- ☐ Shore power – battery charger 30A (house, engine and inverter battery bank charging) and galvanic isolator (include in summer kitchen option)
- ☐ Storage shelf (in head) (convertible for deployment)
- ☐ Summer kitchen – includes: 12 V refrigerator (includes connection to shore power), 2000-watt inverter, automatic charging relay for inverter battery bank charging from engines, Corian countertop, electric grill, shore power with battery charger and galvanic isolator (house, engine and battery bank charging)
- ☐ Sun top with boot (must select hardtop delete) (black or blue)

- ☐ Sunshade – bow (Must select fiberglass hardtop or fiberglass hardtop w/speakers option)
- ☐ Sunshade – cockpit (must select fiberglass hardtop or fiberglass hardtop w/speakers option)
- ☐ Table – bow table with filler cushion
- ☐ Table – cockpit table with dedicated storage
- ☐ Trailer – aluminum with disc brakes, dual torsion axles, guide-on stanchions, LED lights, radial tires, spare tire
- ☐ VacuFlush® toilet, holding tank, overboard discharge and dockside pump-out

FIBERGLASS HARDTOP

- ☐ Grab rails (located on centerline, stainless steel) (2)
- ☐ Lighting – LED navigation lights
- ☐ Lighting – LED overhead courtesy lighting (blue) (4)
- ☐ Lighting – LED courtesy map light (red/white) (1)
- ☐ Rod holders (4)
- ☐ Tow bit
- ☐ Welded aluminum integrated frame with tempered glass windshield

FIBERGLASS HARDTOP WITH SPEAKERS (MUST SELECT STEREO OR DELUXE ELECTRONICS SIMRAD PACKAGE 12" DISPLAY)

- ☐ Blue LED overhead courtesy lighting (4)
- ☐ Grab rails-located on centerline – stainless steel (2)
- ☐ JL waterproof speakers (2)
- ☐ LED navigation lights, rod holders (4)
- ☐ Lighting
- ☐ Lighting (red/white led courtesy map light) (1)
- ☐ Tow bit
- ☐ Welded aluminum integrated frame with tempered glass windshield



NOTABLE OPTIONS/ACCESSORIES

TOP/TOWERS

☐ Hardtop gelcoat (hardtop underside color matches hull color) (options include Abaco Blue, Classic Desert Tan, Glacier Green, Horizon Blue, Light Blue, Light Grey, Platinum, or Steel Blue)

ENGINES

☐ 250 V8 White Dual Mercury® Verado® engines with hydraulic power steering

☐ 300 V8 Black Dual Mercury Verado engines with hydraulic power steering

☐ 300 V8 White Dual Mercury Verado engines with hydraulic power steering

☐ 250 CXL V8 CMS Black Dual Mercury Verado FourStroke® with Joystick Piloting. Outboard docking system with joystick, electronic steering, Skyhook/autopilot keypad functionality. (Simrad or other standalone optional autopilot not permitted with Joystick Piloting) (includes VesselView®) (includes fuel/water separators)

☐ 250 CXL V8 CMS White Dual Mercury Verado FourStroke with Joystick Piloting. Outboard docking system with joystick, electronic steering, Skyhook/autopilot keypad functionality. (Simrad or other standalone optional autopilot not permitted with Joystick Piloting) (includes VesselView) (includes fuel/water separators)

☐ 300 CXL V8 CMS Black Dual Mercury Verado FourStroke with Joystick Piloting. Outboard docking system with joystick, electronic steering, Skyhook/autopilot keypad functionality. (Simrad or other standalone optional autopilot not permitted with Joystick Piloting) (includes VesselView) (includes fuel/water separators)

☐ 300 CXL V8 CMS White Dual Mercury Verado FourStroke with Joystick Piloting. Outboard docking system with joystick, electronic steering, Skyhook/autopilot keypad functionality. (Simrad or other standalone optional autopilot not permitted with Joystick Piloting) (includes VesselView) (includes fuel/water separators)

☐ 400 V10 DTS Black Dual Mercury Verado with hydraulic power steering and fuel/water separator

☐ 400 V10 DTS White Dual Mercury Verado with hydraulic power steering and fuel/water separator

☐ 400 V10 DTS Black Dual Mercury Verado Joystick Piloting. Outboard docking system with joystick electronic steering, Skyhook/autopilot keypad and functionality. (Simrad or other standalone optional autopilot not permitted with Joystick Piloting) (must select Premium Package or VesselView 4" Display)

☐ 400 V10 DTS White Dual Mercury Verado Joystick Piloting. Outboard docking system with joystick, electronic steering, Skyhook/autopilot keypad and functionality. (Simrad or other standalone optional autopilot not permitted with Joystick Piloting) (must select Premium Package or VesselView 4" Display)

ELECTRONICS

☐ Deluxe Electronics Simrad Package 12" display (combines premium electronics options with Port and starboard acrylic dash and switch panels for integrated look and functionality), Simrad® NSX 12" MFD (GPS, chart plotter, fishfinder), Active Imaging 3 in 1 transom mount transducer (CHIRP, SideScan, DownScan), C-Map® Discover™ X Chart Card: North America/Canada, integrated Mercury SmartCraft Connect, custom black acrylic dash areas, stereo system JL audio integration into Simrad Navigation Package, glovebox, port console

☐ Radar dome (must select hardtop or hardtop w/speakers) Simrad HALO24 4 kW 24" high definition digital dome

☐ Satellite weather and radio (requires monthly subscription), satellite radio Sirius® satellite receiver with antenna, Simrad WM-4 Sirius Marine Weather Receiver

☐ VHF radio – Simrad RS20S VHF radio

☐ Auto pilot (not compatible with Joystick Piloting), Simrad NAC-2 autopilot computer



NOTABLE OPTIONS/ACCESSORIES

- ☐ Stereo system (JL Audio integration into Simrad Navigation Package), JL Audio MM105-HR stereo with dash mounted remote volume/mute knob, AM/FM/HD radio, USB audio, and iPhone®/Android® compatible via integrated Bluetooth® 5.0, JL waterproof speakers (6), 10" subwoofer, and 800 watt amplifier
- ☐ VesselView 4" display (replaces SmartCraft® Deluxe Gauges) (network connections to Simrad with Navigation Package)

CANVAS

- ☐ Cockpit cover (includes bow and cockpit) (black or blue)
- ☐ Weather curtain set (includes side curtains, visor, and aft drop curtain) (black or blue)

GELCOAT HULL SIDE COLORS (WITH WHITE HULL BOTTOM)

- ☐ Classic Desert Tan
- ☐ Glacier Green
- ☐ Light Blue
- ☐ Platinum

COLOR PAINTED HULLS (WITH WHITE HULL BOTTOM)

- ☐ Abaco Blue
- ☐ Fighting Lady Yellow
- ☐ Horizon Blue
- ☐ Ice Blue
- ☐ Jadestone
- ☐ Oyster Grey
- ☐ Platinum
- ☐ Sand Metallic
- ☐ Steel Blue
- ☐ Tectonic Silver
- ☐ Wasabi

COLORED GELCOAT UNDERSIDE OF HARDTOP (MUST SELECT HARDTOP OR HARDTOP W/SPEAKERS)

- ☐ Abaco Blue
- ☐ Classic Desert Tan
- ☐ Glacier Green
- ☐ Horizon Blue
- ☐ Light Blue
- ☐ Platinum
- ☐ Steel Blue

GRAPHICS (BW LOGO, STRIPE)

- ☐ Black graphics
- ☐ Blue graphics
- ☐ Chrome graphics (with silver model designator)
- ☐ Red graphics
- ☐ Silver graphics
- ☐ White graphics

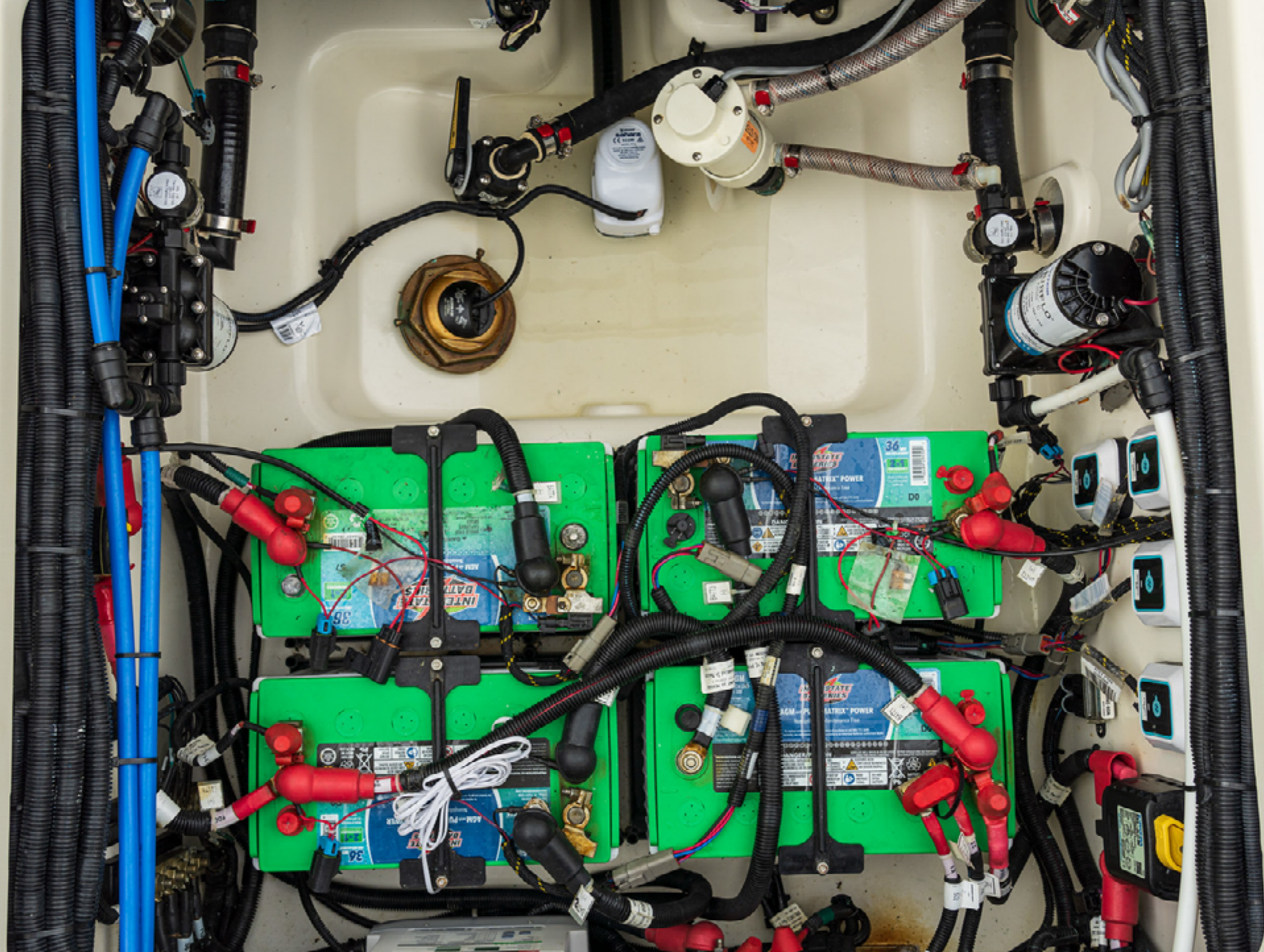
COLORED HARDTOP FRAME (MUST SELECT HARDTOP OR HARDTOP W/SPEAKERS)

- ☐ White (Standard)
- ☐ Black

PAINTED ENGINE ACCENTS (CENTER STRIPE) (MUST SELECT COLORED HULL OPTION)

- ☐ Painted center stripe of engine cowl to match selected hull color





**PETREL GLOBAL SHIPS
& BOATS TRADING LLC**

Business Village-Block B 3d Floor, office
309-310, 221 Al Maktoum Rd, Dubai, UAE
www.petrel-global.com., tel.: +971 52 821 6411

280 VANTAGE



**PETREL GLOBAL SHIPS
& BOATS TRADING LLC**

Business Village-Block B 3d Floor, office
309-310, 221 Al Maktoum Rd, Dubai, UAE
www.petrel-global.com., tel.: +971 52 821 6411

280 VANTAGE

18



**PETREL GLOBAL SHIPS
& BOATS TRADING LLC**

Business Village-Block B 3d Floor, office
309-310, 221 Al Maktoum Rd, Dubai, UAE
www.petrel-global.com, tel.: +971 52 821 6411

280 VANTAGE

BOSTON
WHALER



**PETREL GLOBAL SHIPS
& BOATS TRADING LLC**

Business Village-Block B 3d Floor, office
309-310, 221 Al Maktoum Rd, Dubai, UAE
www.petrel-global.com, tel.: +971 52 821 6411

280 VANTAGE

20