


BAVARIA YACHTS

Bavaria 45HT



**PETREL GLOBAL SHIPS
& BOATS TRADING LLC**

Office 621, 6th Floor Block A, Business Village.
Port-Saeed Deira, Dubai UAE
www.petrel-global.com, tel.: +971 52 821 6411

TECHNICAL DATA

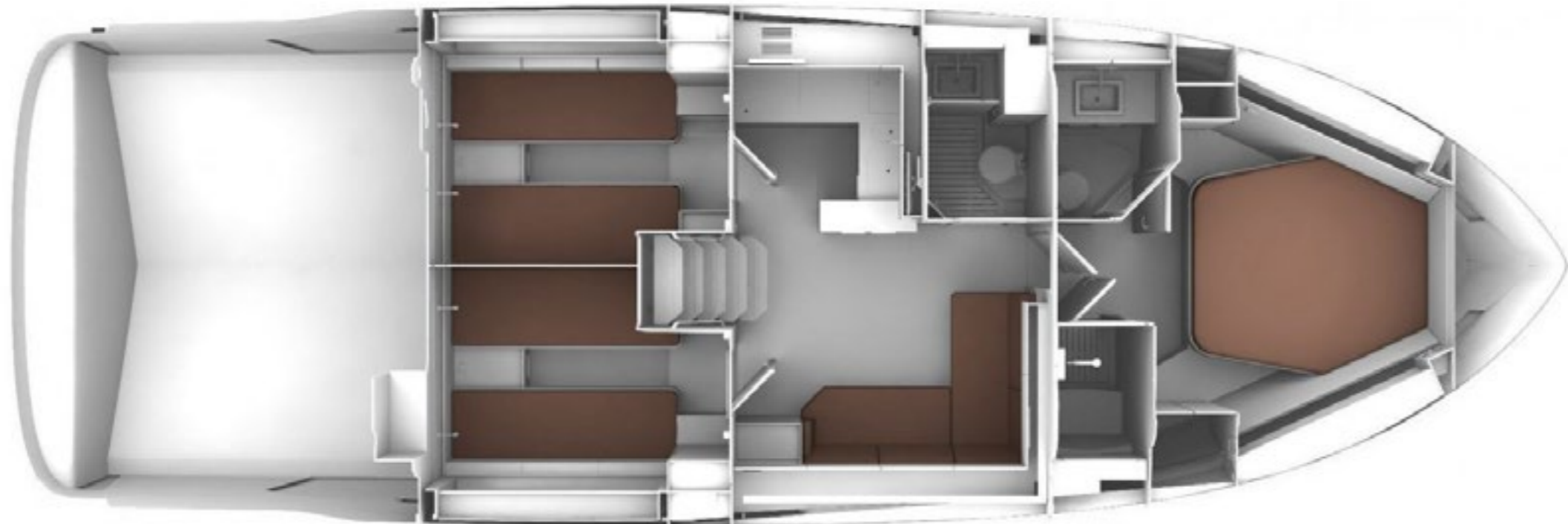


LH, m 14.99
 Max beam, m 4.41
 Draught, m 1,1

Fuel, l 1500
 Water, l 410
 People on board 12

Cabins 3
 Toilets 2
 Max speed 34

Cruise speed, kn 24
 ENGINE Volvo Penta 2 x 380 HP















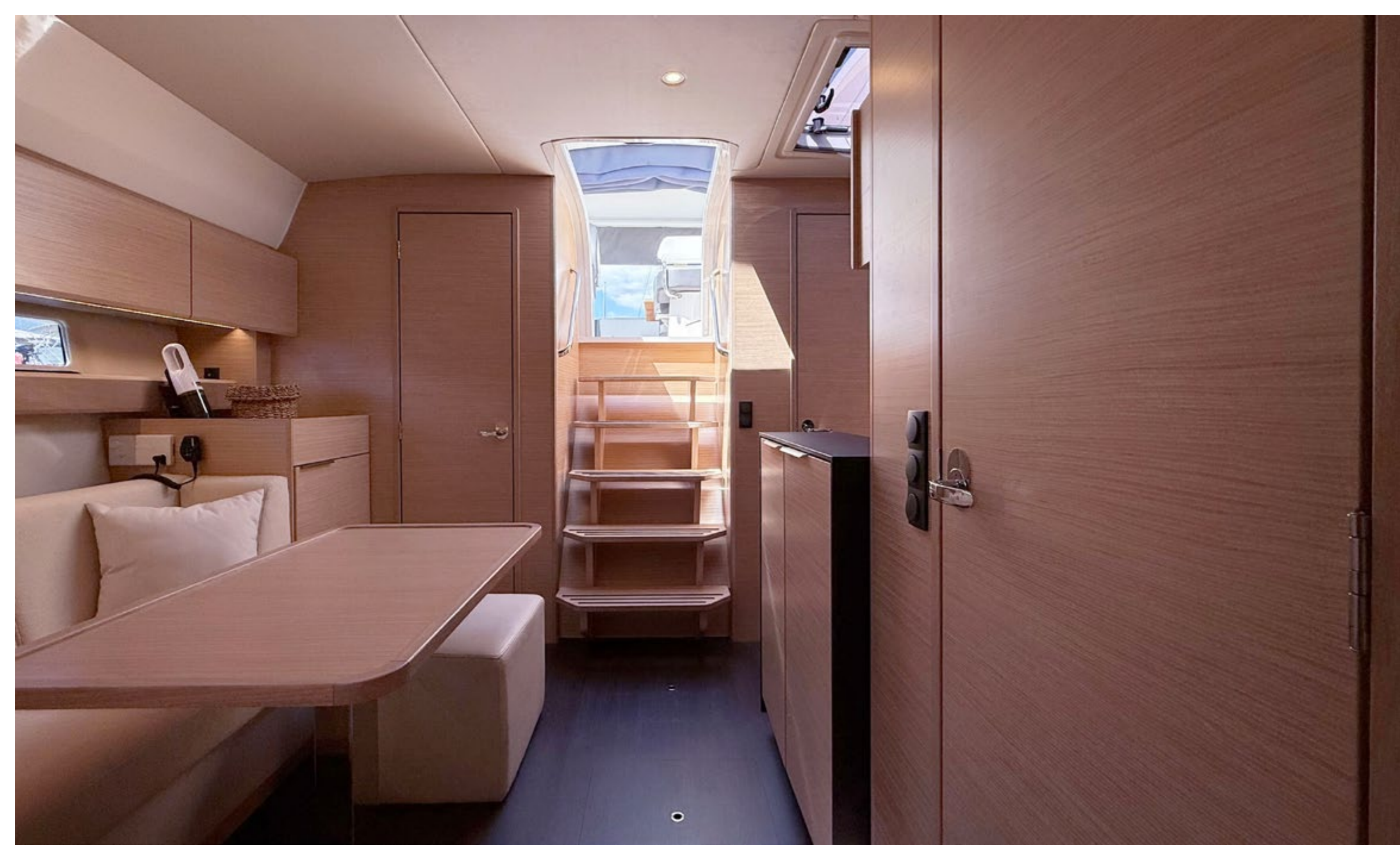
















EQUIPMENT

PROPULSION SYSTEM:

- engines: 2 x Volvo Penta D6-380 EVC
- power: 2*279 KW
- fuel type: Diesel

PLACEMENT:

- cabins: 3
- toilets: 2
- showers: 2

EQUIPMENT:

- boat has following additional equipment SMART POWER Pack Trim tabs (electrically adjustable)
- multifunction display Simrad NSS evo3S 12" with integrated GoFree™ Wi-Fi and Bluetooth all-weather touch screen with expanded keypad on main helmstand
- HF Simrad RS40 with inbuilt AIS Receiver + wireless handset Simrad

HS40 Transducer for speed,depth and temperature

NAVIGATION:

- GPS
- autopilot
- compass
- chartplotter
- echo sounder
- VHF radio

TECHNICAL EQUIPMENT:

- diesel generator, 6,4 kW maximum output
- air conditioner
- charger
- bow thruster 100 kgf (electr. incl. battery)
- windlass
- shore power, 230 V

DECK EQUIPMENT:

- hydraulic bathing platform maximum load 450 kg
- bathing ladder
- teak on cockpit floor
- bathing platform with teak
- sun pad on foredeck with foldable backrest
- cockpit upholstery "Silververtex"
- bimini
- anchor, 20 kg, incl.
- chain galvanized (10 mm, 50 m)

INTERIOR EQUIPMENT:

- refrigerator(2)80 liters, 12 V
- icemaker
- TV
- air conditioning, reverse cycle, 26.000 BTU, 2 units for salon, master cabin and guests cabins







BAVARIA YACHTS



**PETREL GLOBAL SHIPS
& BOATS TRADING LLC**

Office 621, 6th Floor Block A, Business Village.
Port-Saeed Deira, Dubai UAE
www.petrel-global.com, tel.: +971 52 821 6411